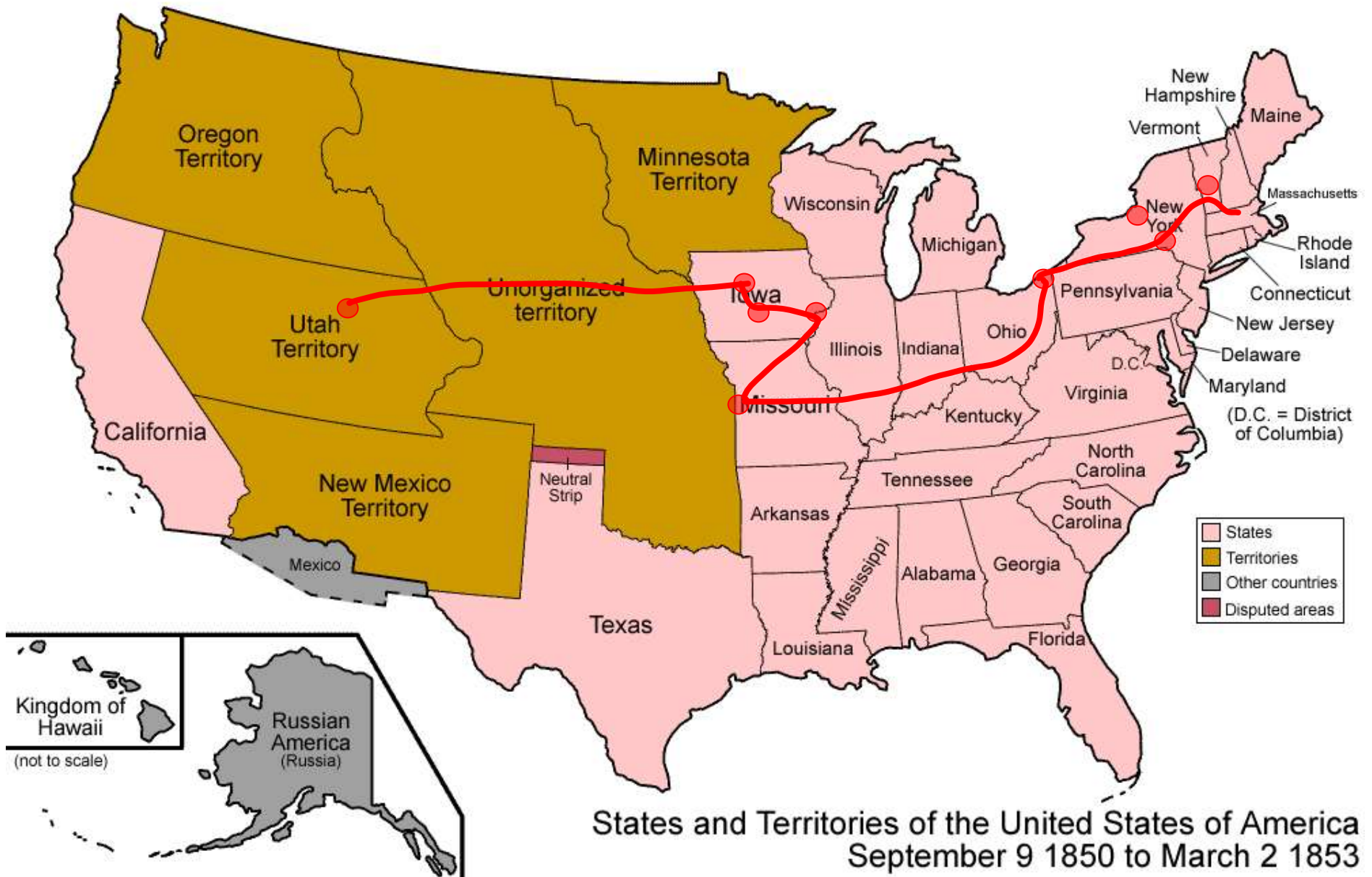


# Taking a Knight Family Road Trip





States and Territories of the United States of America  
September 9 1850 to March 2 1853

# MASSACHUSETTS & VERMONT

1. Joseph Knight Sr. born 26 Nov. 1772 in Oakham, Mass.
2. Father Benjamin Knight came from Sudbury Mass., died in Marlboro Vermont. Parents Samuel Knight and Anne Eames of Framingham Mass. Mother Sarah Crouch came from Oakham, Mass. Died in Marlboro Vermont. Parents John Crouch and Hannah Brown of Worcester, Mass.
3. Polly Peck, born Aril 6, 1774 in Guilford Vermont. Moved to Chenango NY.
4. Father Captain Peck was born in Attleboro, Mass. Died in Bainbridge, NY in 1818. Parents Hezekiah Peck and Elizabeth Carder of Attleboro, Mass. Mother Elizabeth Read came from Attleboro, Mass. Died in 1790 in Westford, Mass. Parents Noah Read and Abigail Robbins of Attleboro, Mass.
5. Father Captain Peck was a captain of the Pro-New York Vermont Sufferers who was given a 640 acre portion of an 8 square mile area along the Susquehanna by the State of NY. Lived in the town of Jericho.
6. If you travel from upstate New York up to Vermont to see the Joseph Smith Monument you will want to drive through Massachusetts and should take time to visit **Old Sturbridge Village (living museum)** which is right in middle of many towns where Knights, Pecks, and even Goldthwaites lived. Then on the way to Boston, stop in Attleboro to see the original Hezekiah Peck home and cemetery. And then if you have time, go to Plymouth. But be sure to see all the great historical sites in Boston. Even old cemeteries are fun to walk through.





Joseph Smith Birthplace  
Polly Peck Birthpalce

Joseph Knight Birthplace,  
Hezekiah Peck Birthplace,  
Lydia Goldthwaite Birthplace

# NEW YORK

1. Colesville (Nineveh)
  - Joseph and Polly Knight and children
  - DeMilles
  - Newel Knight
  - Pecks
  - Josiah Stowell
2. Afton – Joseph and Emma Marriage, (Squire Tarble’s house) Now a sign next to the Fairgrounds. Near Intersection of Evelyn Street and Main Street.
3. Bainbridge – Joseph Smith was taken to trial but represented by a lawyer who was paid for by Joseph Knight and Josiah Stowell. It was upon their return from the trial that they were able to walk by their enemies unrecognized. Trial took place in what is now the Jericho Tavern.
4. Be sure to visit the cemeteries in the area.
5. Drive along the Susquehanna River towards the Harmony Visitors Center and see other local historic sites, bridges, towns, etc.
6. Drive northeast towards Massachusetts and the Cooperstown Baseball Hall of Fame is not far away.
7. Stay in Binghamton, or nearby Sidney or a Bed and Breakfast such as the Pumpkin Pine Farm 5 miles south along the Susquehanna.

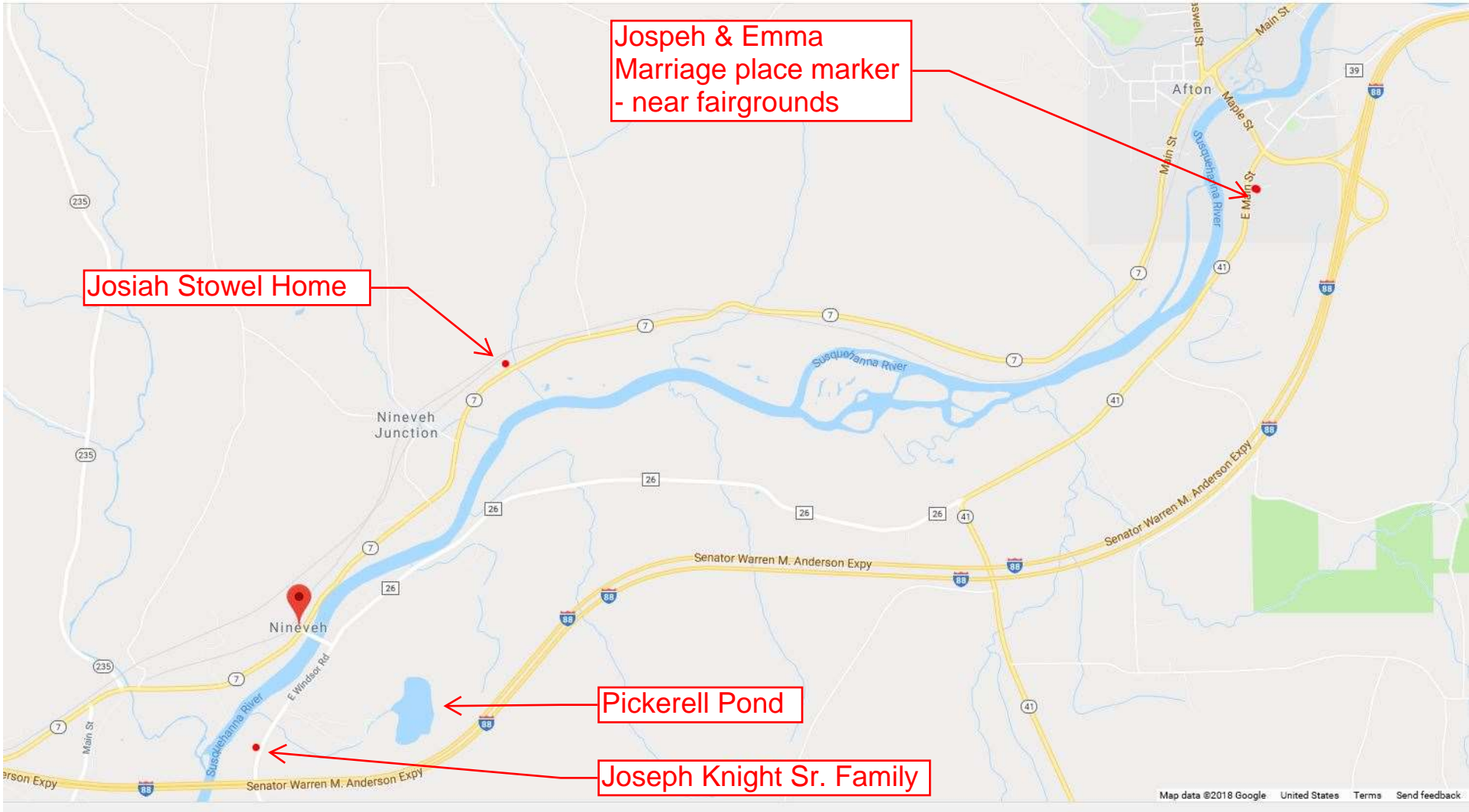


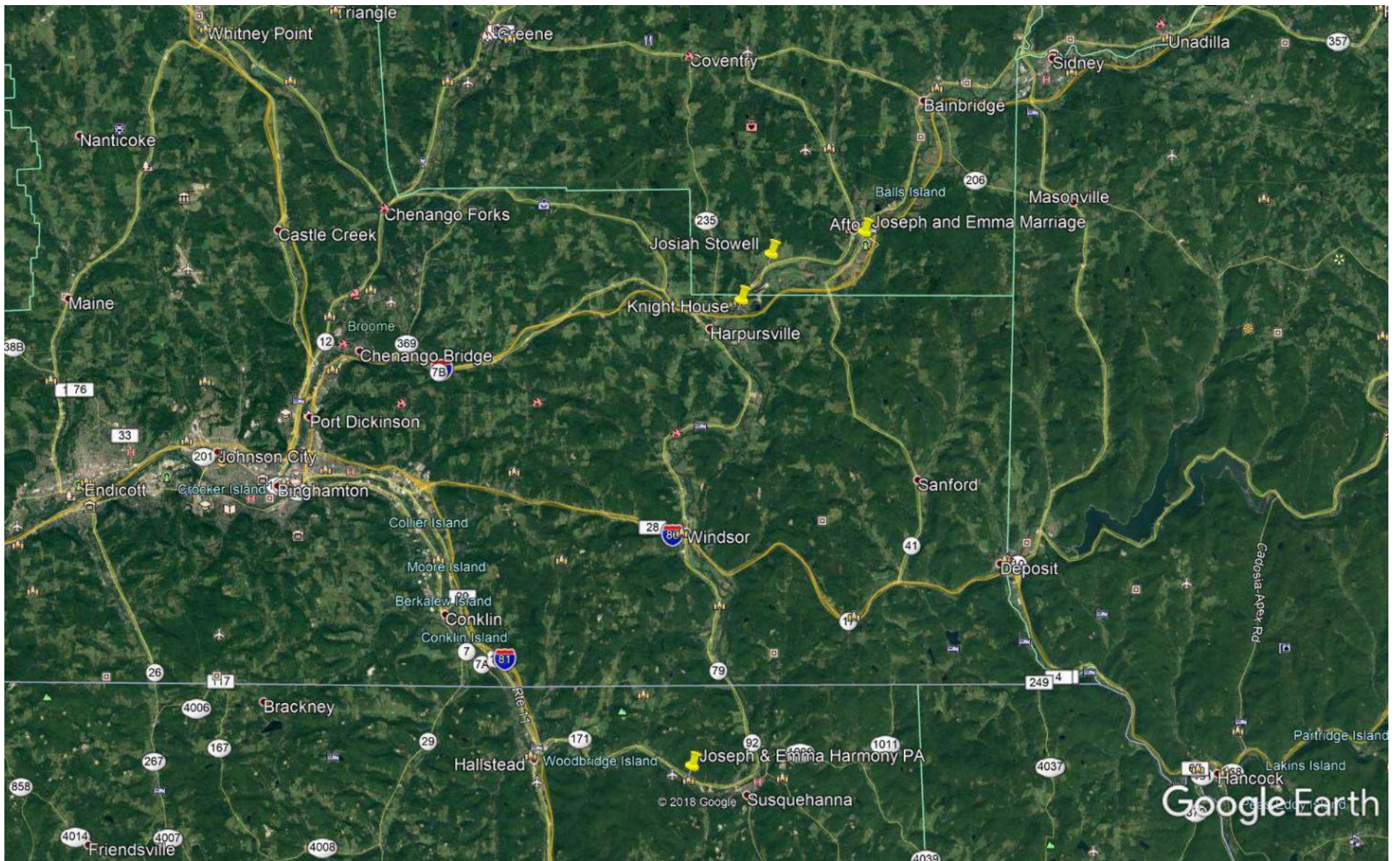
Jospeh & Emma  
Marriage place marker  
- near fairgrounds

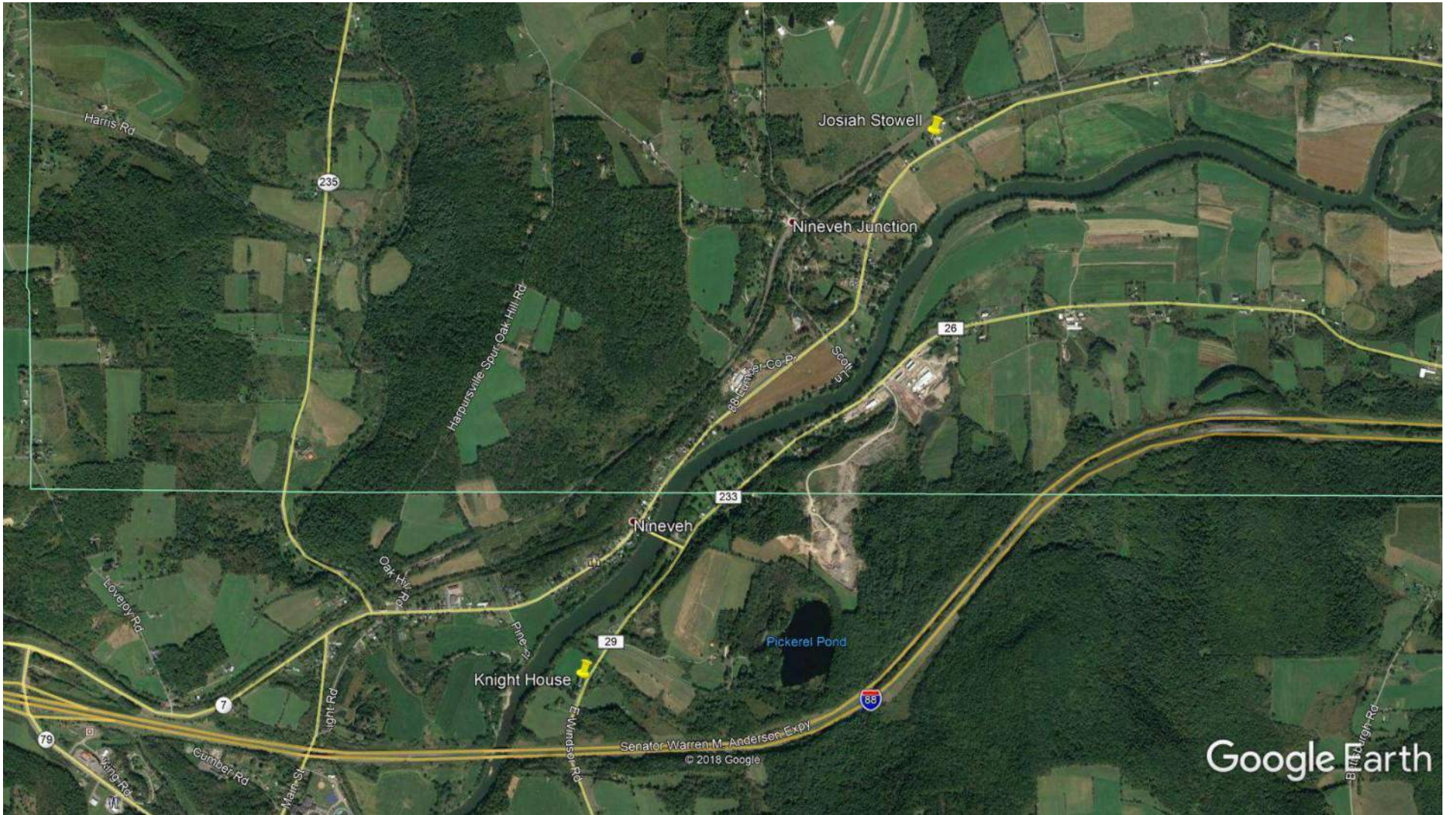
Josiah Stowel Home

Pickerell Pond

Joseph Knight Sr. Family







Google Earth

© 2018 Google



# PENNSYLVANIA, NY, & OHIO

8. Harmony (Oakland PA) – Priesthood Restoration Site, Joseph and Emma home, Hale Farmhouse. 30 miles south from Nineveh, small back roads, neat old bridges. *Joseph Knight traveled to Harmony to bring supplies to Joseph during the Book of Mormon translation. Also lent his horse and sleigh to Joseph and Emma to travel to Harmony.*
9. Palmyra – Joseph Smith Sr. Frame home & log home, Sacred Grove, Hill Cumorah, Printing Press. *Joseph and Josiah Stowell were staying at the Smith home the night / morning Joseph Smith received the plates. Joseph and Emma Smith borrowed Joseph Knights horse and carriage to retrieve them. The Knights also milled the Smith grain.*
10. Waterloo (Peter Whitmer Home) – *Many from the Colesville Branch were at the Whitmer home the day the Church was organized.*
11. Kirtland – 260 miles SW from Palmyra. 360 miles West from Harmony. 610 miles to Nauvoo through Chicago. *When Newel Knight returned to Kirtland after Sally died and while the temple was built, he met Lydia Goldthwaite while they were both staying with Hyrum Smith.*
12. Thompson, Ohio (Leman Copely Farm) 16 miles northeast of Kirtland – *Colesville Branch & Knight Families lived for short time on their property until they were asked to leave and Joseph Smith asked them to be the first settlers in Zion, Kaw Township and Independence Missouri.*

## Colesville Branch Story

<https://history.lds.org/article/doctrine-and-covenants-colesville-branch?lang=eng>

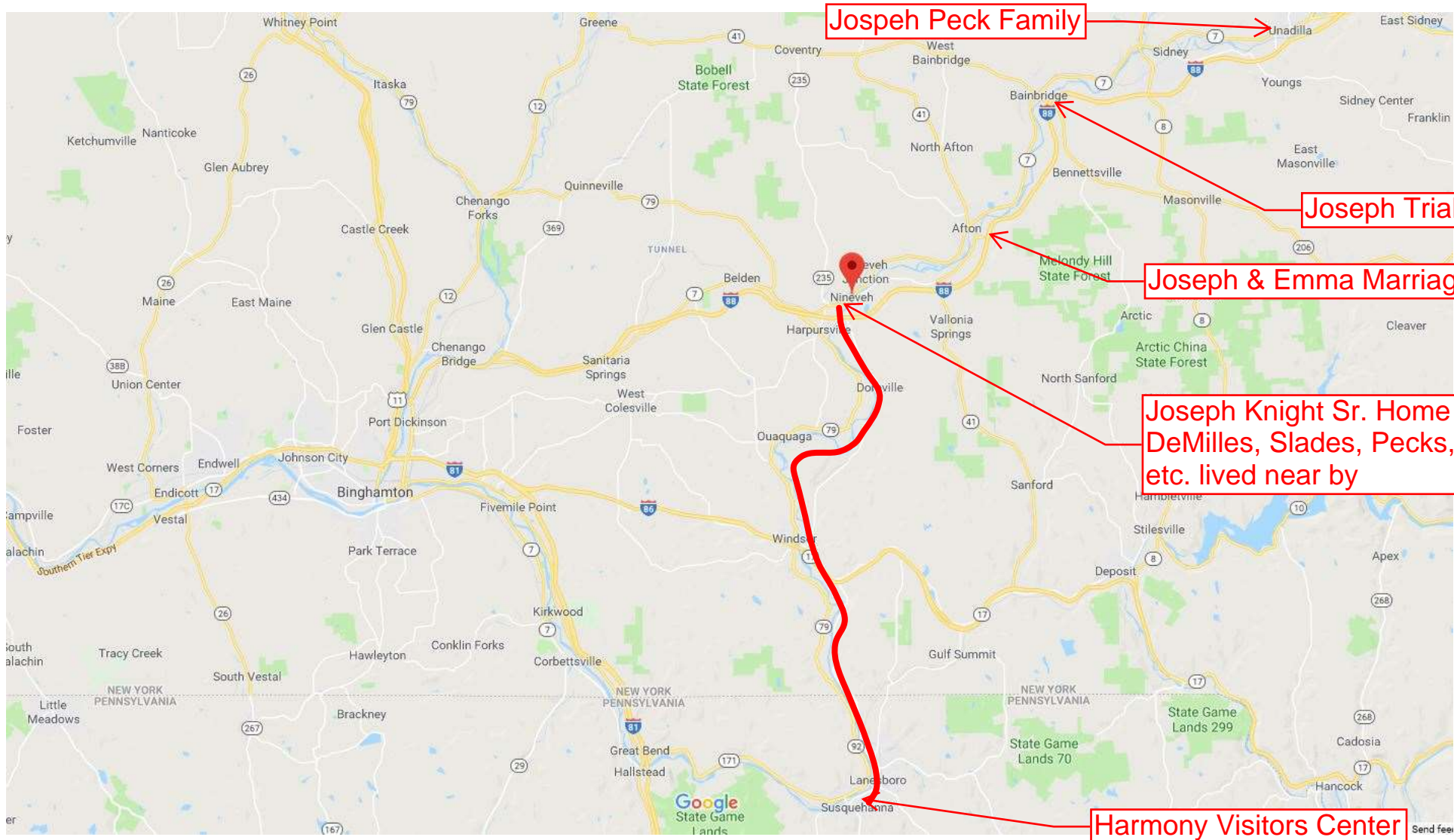
## Lydia Goldthwaite Story

[https://www.lds.org/ensign/1977/08/lydia-knight-god-rules-was-her-motto?lang=eng&\\_r=1](https://www.lds.org/ensign/1977/08/lydia-knight-god-rules-was-her-motto?lang=eng&_r=1)

## Newel and Lydia Love Story – Bill Hartley – Great Read

<https://scholarsarchive.byu.edu/cgi/viewcontent.cgi?referer=https://www.bing.com/&httpsredir=1&article=4063&context=byusq>





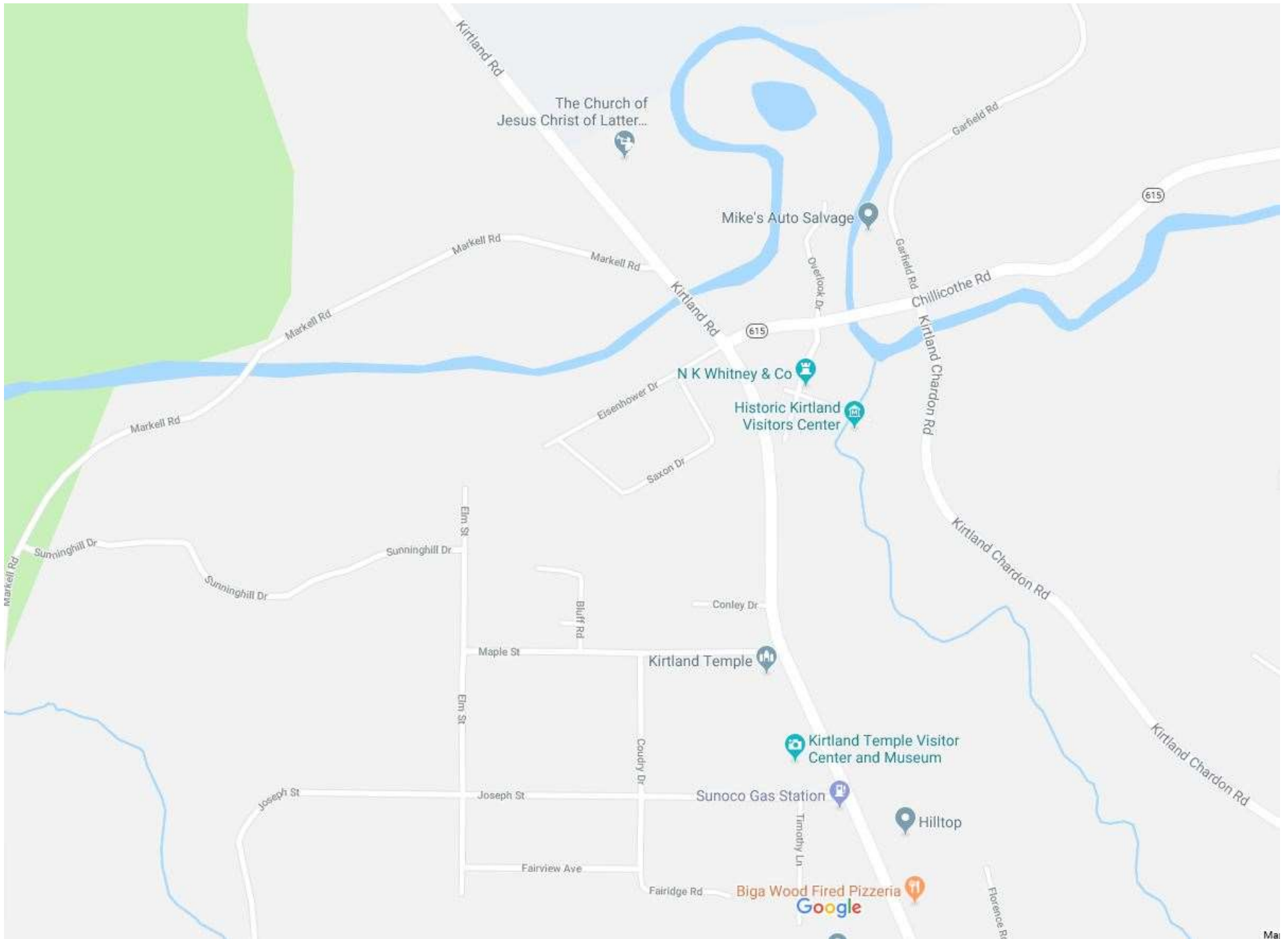
Jospeh Peck Family

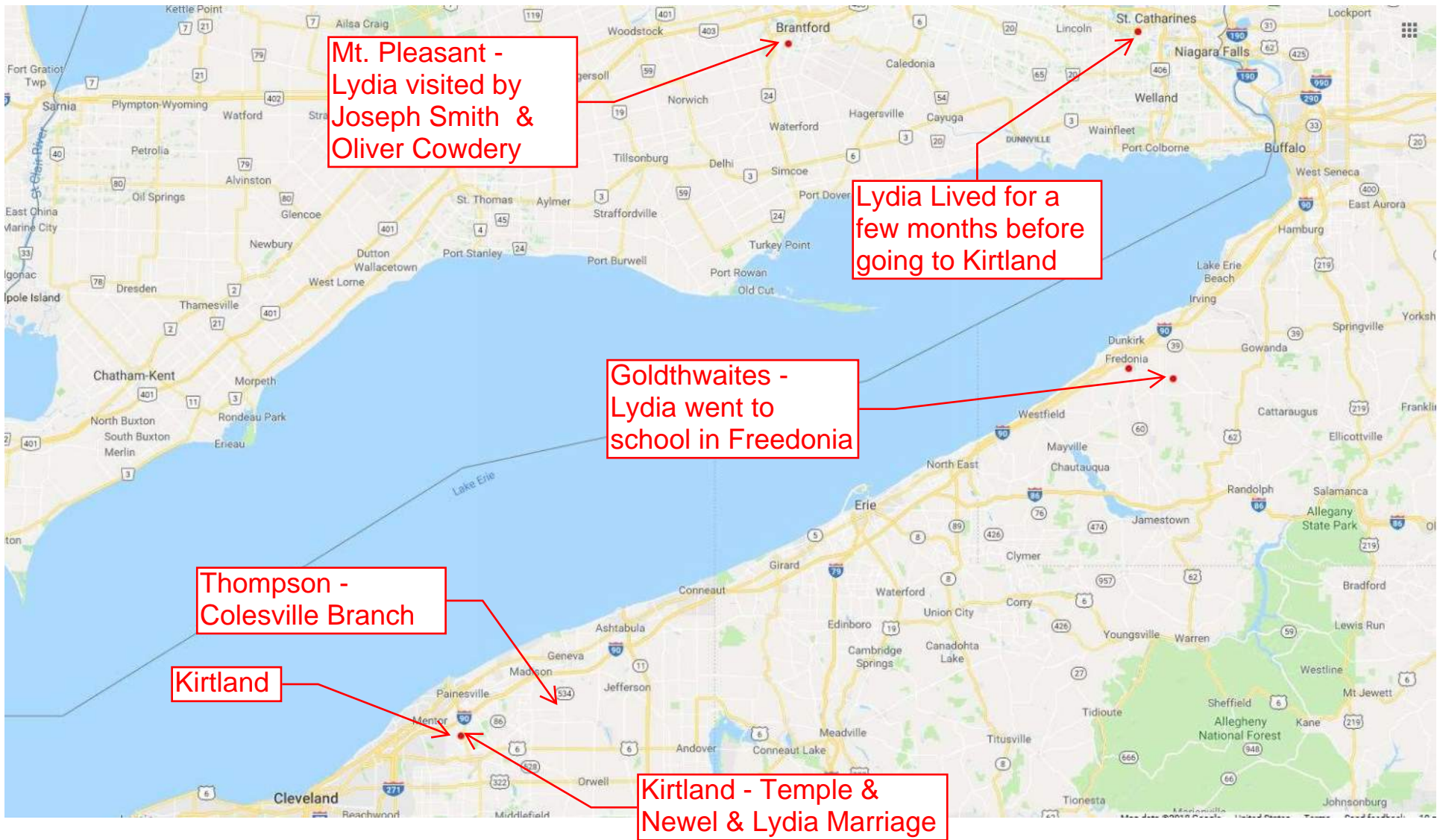
Joseph Trial

Joseph & Emma Marriage

Joseph Knight Sr. Home -  
DeMilles, Slades, Pecks,  
etc. lived near by

Harmony Visitors Center





Mt. Pleasant -  
Lydia visited by  
Joseph Smith &  
Oliver Cowdery

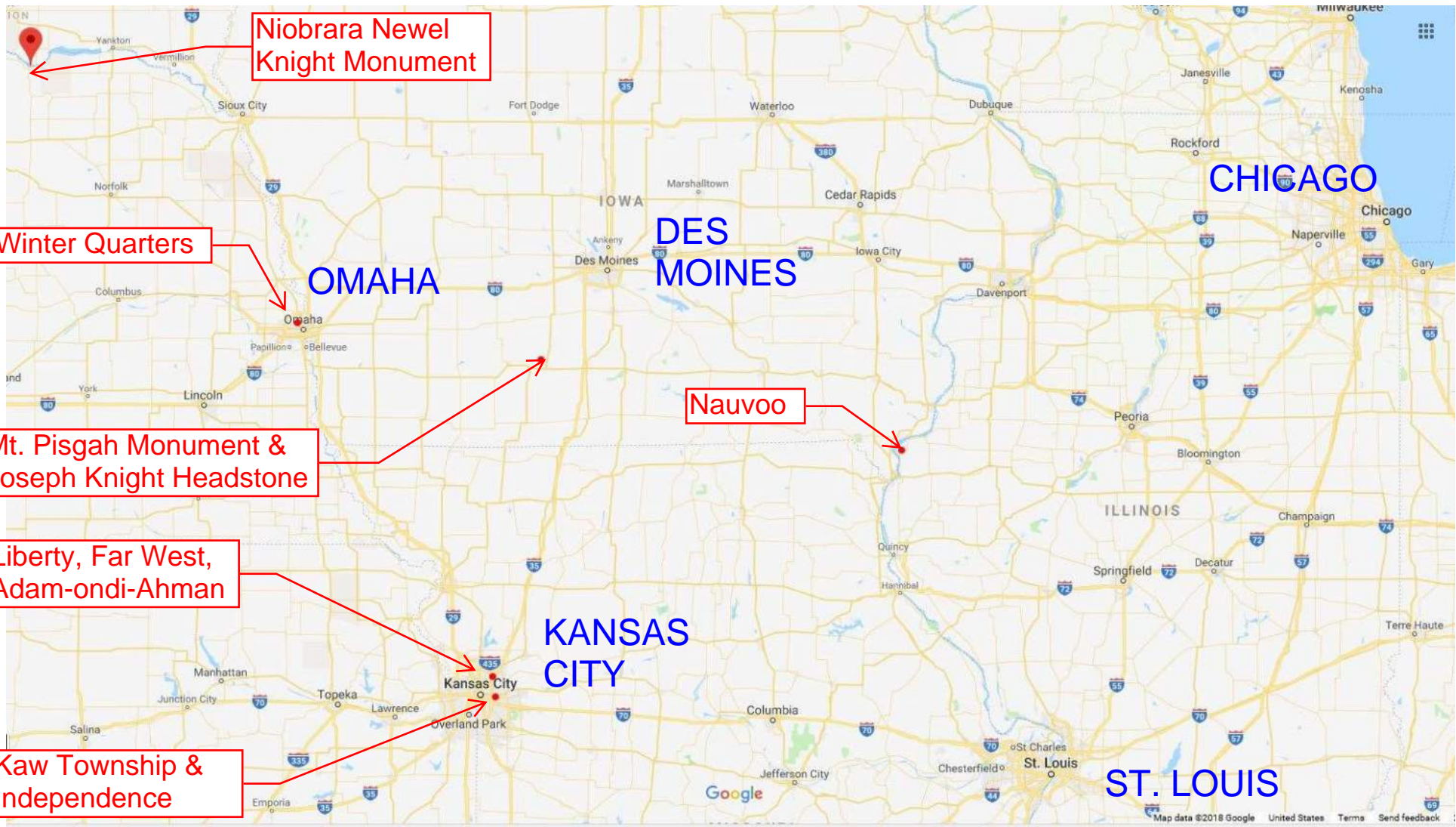
Lydia Lived for a  
few months before  
going to Kirtland

Goldthwaites -  
Lydia went to  
school in Fredonia

Thompson -  
Colesville Branch

Kirtland

Kirtland - Temple &  
Newel & Lydia Marriage



Niobrara Newel Knight Monument

Winter Quarters

Mt. Pisgah Monument & Joseph Knight Headstone

Liberty, Far West, Adam-ondi-Ahman

Kaw Township & Independence

CHICAGO

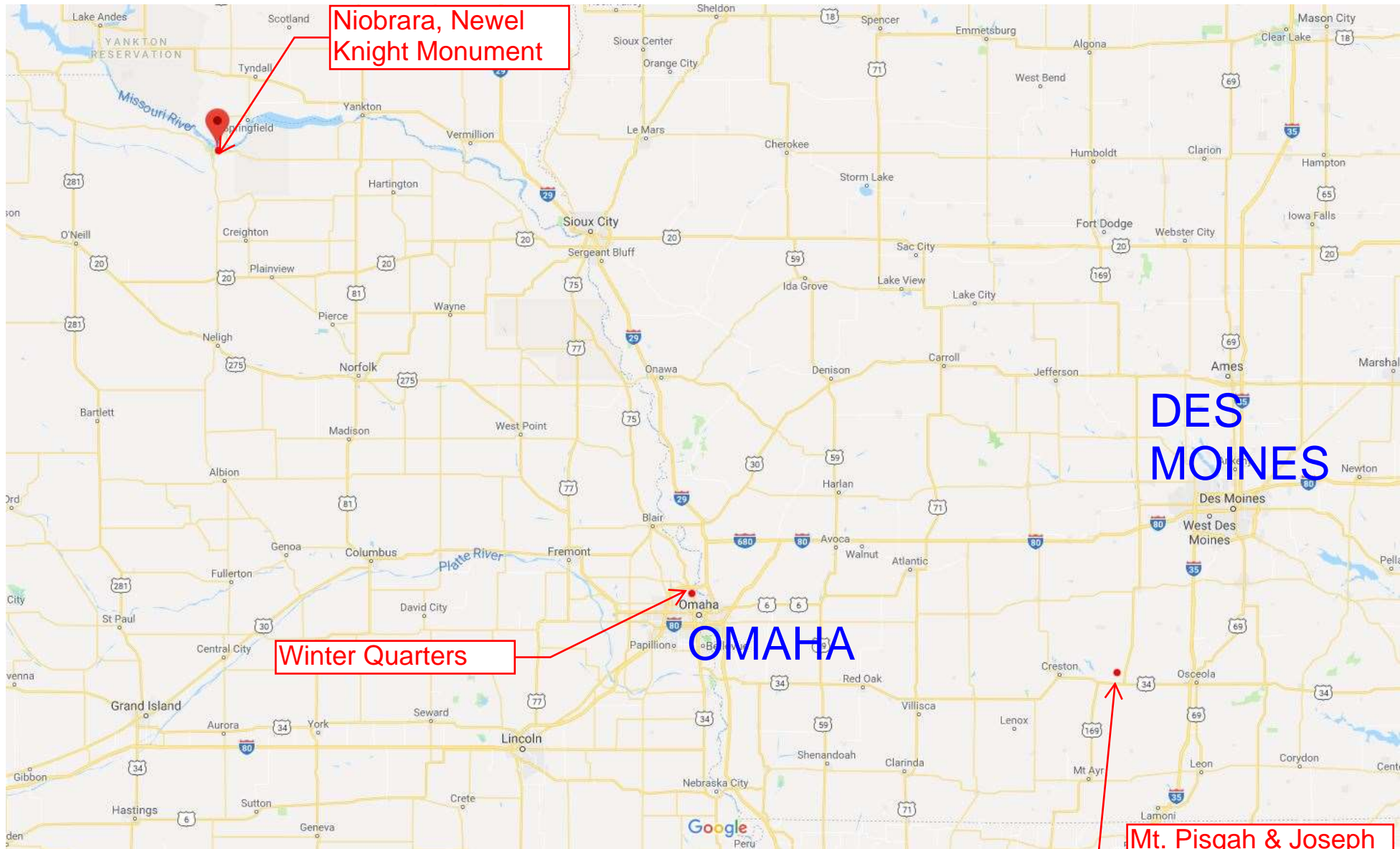
OMAHA

DES MOINES

Nauvoo

KANSAS CITY

ST. LOUIS



Niobrara, Newel Knight Monument

Winter Quarters

Mt. Pisgah & Joseph Knight Sr. Headstone

OMAHA

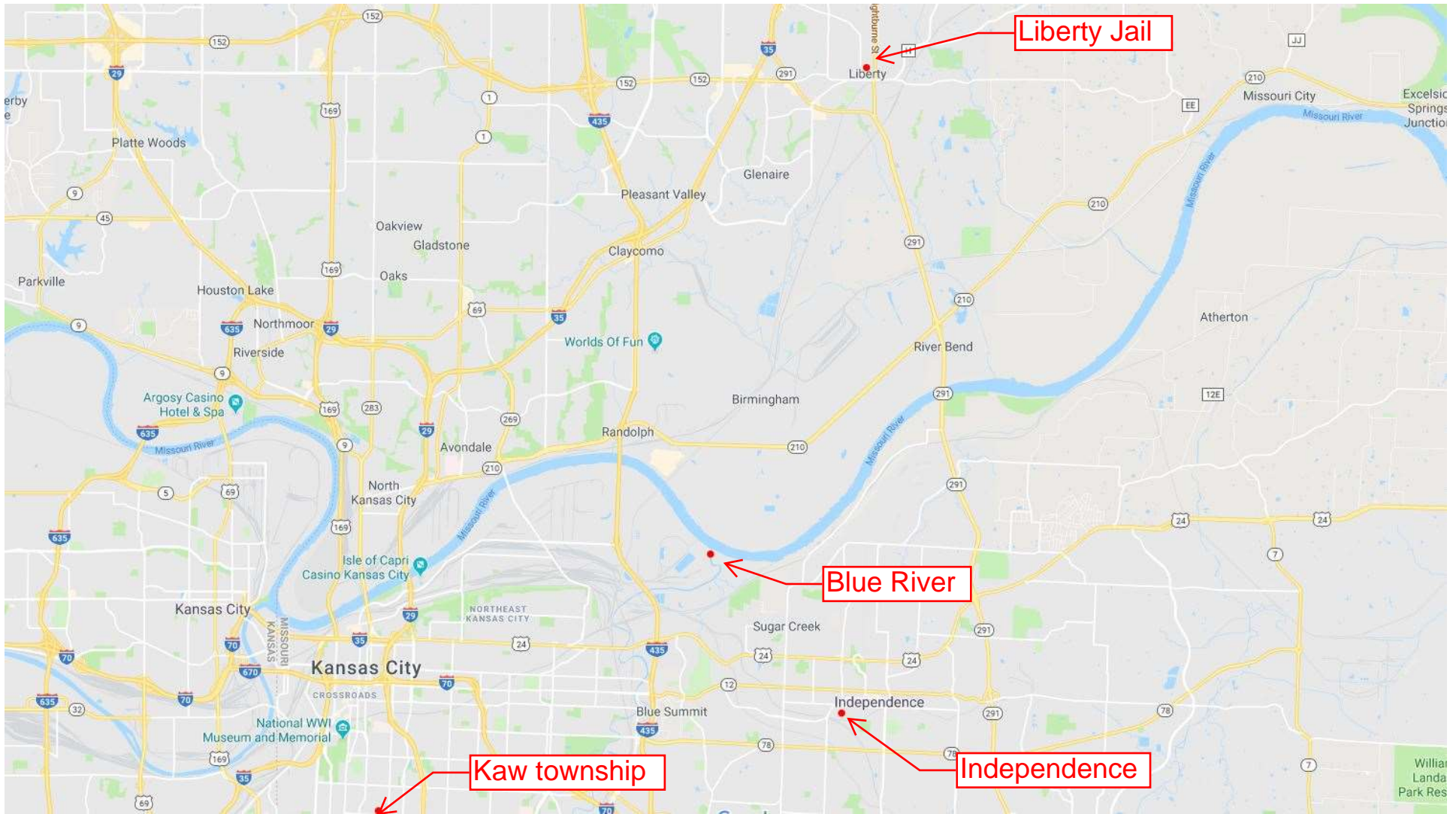
DES MOINES

# MISSOURI

1. Kaw Township
  - Colesville Branch first settled here by direction from Joseph Smith who helped them purchase property
  - Log was cut and carried by 12 priesthood holders, including Knights and DeMilles
  - Nearby Big Blue river that flows into the Missouri River where a battle took place.
  - Polly Knight died in Kaw Township
2. Independence
  - Independence Visitors Center. 10 miles east of Kansas City
3. Clay County
  - Where the Colseville Branch moved after being driven out of Kaw Township
  - Driven out of Jackson County, the Saints crossed the Missouri River near this point by ferry at Independence Landing. It was November. Parley P. Pratt recorded: "Hundreds of people were seen in every direction, some in tents and some in the open air around their fires, while the rain descended in torrents. ... Some had the good fortune to escape with their families, household goods, and some provisions; while others knew not the fate of their friends, and had lost all their goods. The scene was indescribable." (*Autobiography*, 6th ed)
4. Liberty
  - Liberty Jail Visitors Center. 10 miles NE of Independence
5. Far West
  - 32 miles NE of Liberty. Temple Cornerstones
  - Far West today is peaceful and pastoral. In 1838, it was Church headquarters. The Saints purchased thousands of acres of land in the area, but nothing now remains of their school, stores, homes, and bustling city
6. Adam-ondi-Ahman
  - 22 miles NE of Far West – Beautiful place.
7. Kansas City
  - National World War 1 Museum & Park. Money Museum.

[https://www.lds.org/ensign/1979/04/the-way-it-looks-today-a-camera-tour-of-church-history-sites-in-missouri?lang=eng&\\_r=1](https://www.lds.org/ensign/1979/04/the-way-it-looks-today-a-camera-tour-of-church-history-sites-in-missouri?lang=eng&_r=1)





Liberty Jail

Blue River

Kaw township

Independence



# ILLINOIS, NAUVOO

## 1. Newel Knight Flouring Mill Plaque

- Through the constant efforts of Dean Collinwood, third great-grandson of Newel Knight, a marker honoring Newel Knight and his flouring mill in Nauvoo, Illinois, was permanently erected in early summer 2009. It is located across the street from the entrance to the Community of Christ Joseph Smith History Museum, close to the bank of the Mississippi River. Together with other Knight descendants, Barry and Vira Johnson, Dean dedicated the site.

## 2. Nauvoo - Knight Street

- Named after Joseph Knight Sr. and Family
- Imagine Joseph Smith giving his cane to Joseph Knight Sr. "Brother Knight, you need this cane more than I do." The Prophet told Father Knight to keep the cane as long as he lived and to pass it on to Knight descendants with the first name of Joseph.

## 3. Newel Knight's House

- Although it is not there anymore, we can imagine this house in Nauvoo where Newel and Lydia lived for a while until they left.





## HISTORIC NAUVOO

All sites, shows, tours and rides in Historic Nauvoo are FREE.

● Parking ▲ Restrooms

1. Brickyard
2. Brigham Young Home
3. Browning Home & Gunsmith Shop
4. Carriage Ride
5. Cultural Hall
6. Family Living Center
7. Family Search Center
9. Heber C. Kimball Home
10. Historic Nauvoo Visitors' Center
11. John Taylor Home
12. Joseph & Hyrum Smith Memorial
13. Land and Records Office
14. Lucy Mack Smith Home
15. Lyon Drug & Variety Store
16. Nauvoo Groves
17. Nauvoo Pageant
18. Nauvoo Temple
19. Nauvoo Temple Arrival Center
20. Old Nauvoo Burial Grounds
21. Oxen Wagon Ride
22. Outdoor Stage
23. Pendleton Home & Log School
24. Pioneer Memorial & Exodus to Greatness
25. Pioneer Pastimes
26. Post Office
27. Print Shop
28. Quarry Overlook
29. Riser Boot and Shoe
30. Sarah Granger Kimball Home
31. Scovil Bakery
32. Seventies Hall
33. Stoddard Tin Shop
34. Trail of Hope
35. Wagon Tour of Old Nauvoo
36. Webb Brothers' Blacksmith Shop
37. Wilford Woodruff Home
38. Women's Garden

## JOSEPH SMITH HISTORIC SITE

Sites owned and operated by Community of Christ.

- A. Joseph Smith Historic Site Visitors' Center
- B. Nauvoo House
- C. Homestead
- D. Mansion House
- E. Smith Family Cemetery
- F. Red Brick Store

For site hours & additional information:  
[www.HistoricNauvoo.net](http://www.HistoricNauvoo.net)

## CITY OF NAUVOO



**Historic Nauvoo Visitors' Center**  
 Corner of Partridge and Hubbard • Nauvoo, IL  
 N40° 33.217' W91° 23.408'

**Carthage Visitors' Center**  
 310 Buchanan St. • Carthage, IL  
 N40° 24.892' W91° 8.365'

## HANCOCK COUNTY, ILLINOIS



# IOWA, Mt Pisgah

Far off the beaten path in south-central Iowa, a 12-foot-high monument rises from the prairie, marking the site of a temporary Latter-day Saint settlement. This monument represents the Church's first effort to memorialize its history at the actual places where events unfolded. Like the ancient Israelites, who raised stone markers to remember God's blessings in delivering them to their promised land (see Joshua 4:19–24), the Latter-day Saints have commemorated their sacrifices and God's blessings on the journey to their own promised land.

A memorial for many pioneers and where a new headstone for Joseph Knight Sr. was recently created by Charlie Clayton and his family with the help of Bob Brown who owns the land it was placed on.

170 miles north of Independence (150 from Liberty Missouri – Liberty Jail) – taking I-35 toward Osceola and then US-34 west to US-169 North, which is 1.6 miles west of Thayer, IA. Then 2.3 miles north to 167 St. and then west 1.2 miles to the turnoff south to Mt Pisgah Road.

Omaha NE, (Winter Quarters) is 100 miles to the west. Nauvoo is 150 miles to the east.

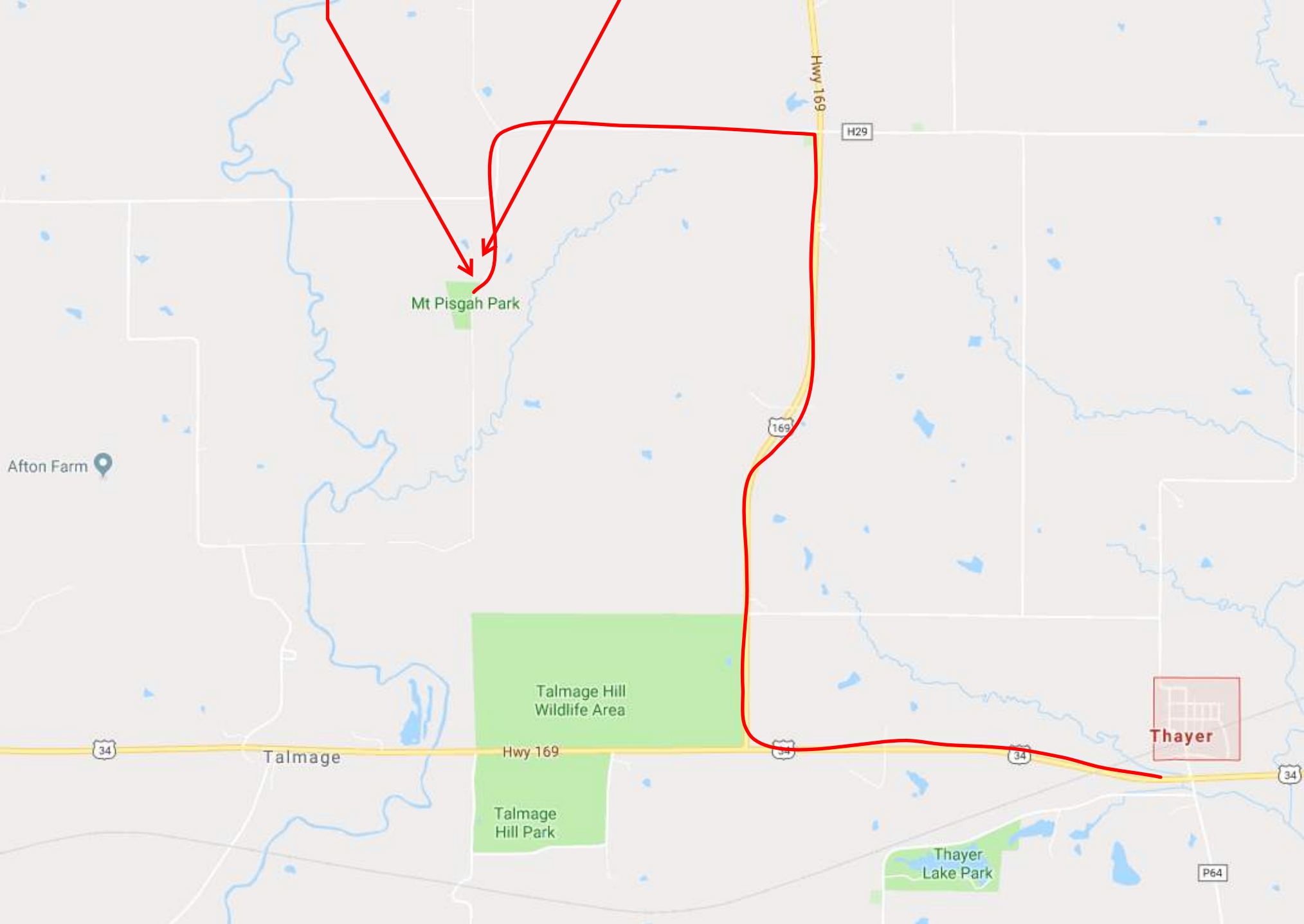
Visit this website before going. It gives great info on the history of the place and how to get there.

<https://history.lds.org/article/historic-sites/iowa/remembering-mount-pisgah-iowa?lang=eng>



Mt. Pisgah Park -  
Church Historical Site

Joseph Knight Sr.  
Memorial Headstone



Mt Pisgah Park

Talmage Hill  
Wildlife Area

Talmage  
Hill Park

Thayer  
Lake Park

Thayer

Afton Farm

34

Talmage

Hwy 169

34

34

34

Hwy 169

H29

169

P64

# Nebraska, Niobrara

Newel Knight Monument - Erected in 1908 (by Jesse Knight)  
NEWELL KNIGHT Born Sept. 13, 1800. Died Jan. 11, 1847

Niobrara Nebraska – 1.1 mile west of Niobrara along route 12 to 522 Avenue and then 0.4 miles south on east side of road

**Mormon Monument-** Those buried there are: Newell Knight, Mr. Caval, Lucy Brunson, Ann Boyce, Mrs. Rufus Tach, Mrs. Spicer Crandall, Mrs. Newell Drake, Mrs. Dame Gardurout Noble and Benjamin F. Mauer

Knight was one of a party of Mormons that spent the winter of 1846-47 on the Niobrara River not far from modern Niobrara, Nebraska. A group of 65 families left Kaneshville, Iowa, in the summer of 1846, bound for the West. The party followed the Platte valley to the vicinity of Columbus, or Genoa, Nebraska. Here they contracted to harvest a grain crop planted by federal agents. With the undertaking completed and the season advancing, it was apparent that they could not proceed farther with safety. A band of Ponca guided them to a suitable campsite near the mouth of the Niobrara River, where winter quarters were established. During the prolonged course of the cold winter, Newell Knight and sixteen others, mostly women and children, died of pneumonia. Many years later, the family of Knight, and others, discovered the old camp, but the graves could not be found. Subsequently, the monument was erected on the site by Knight's sons and daughters.

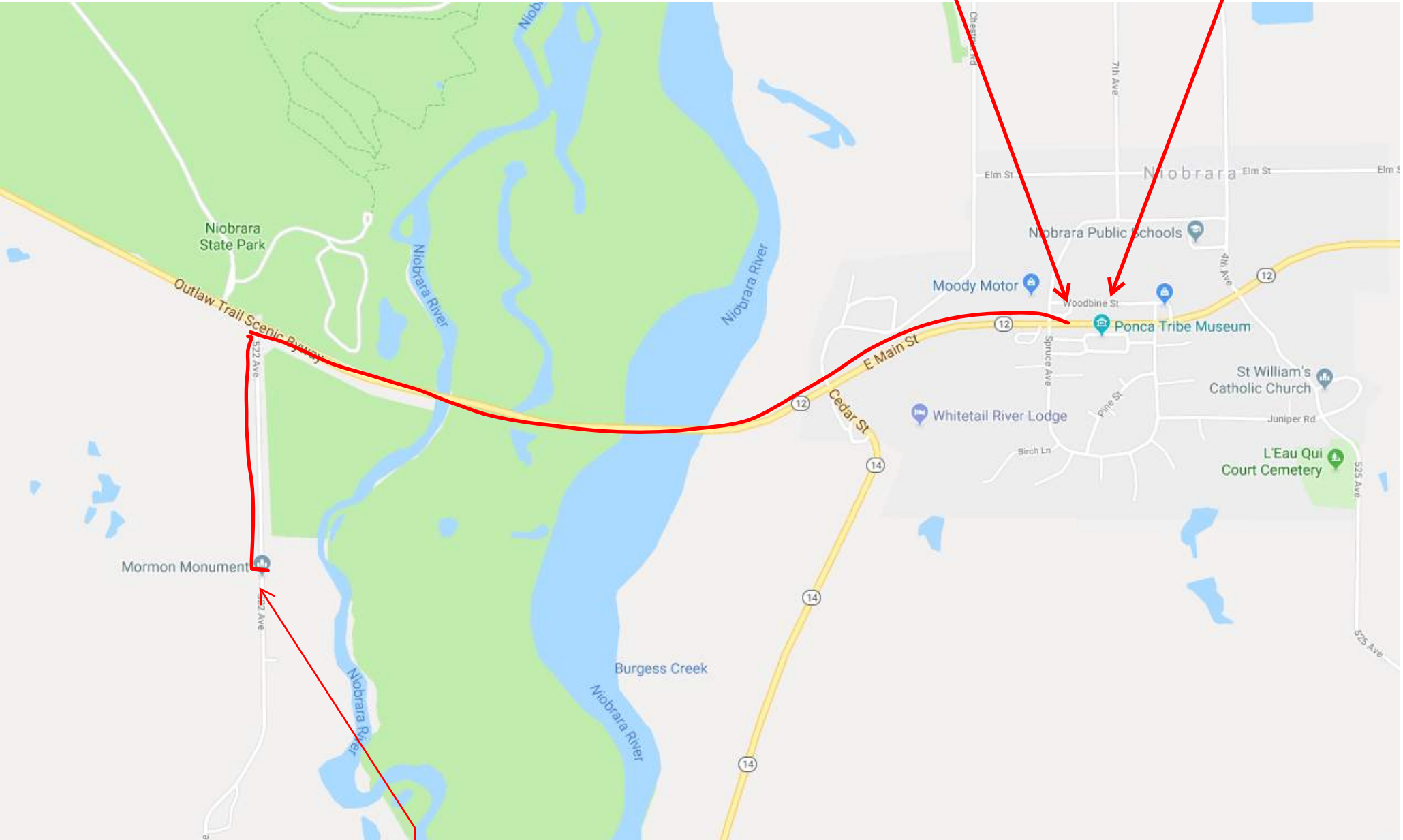
Visit this website before going. It gives great info on the history of Winter Quarters and surrounding areas and how to get there.

<https://history.lds.org/article/historic-sites/nebraska/iowa/what-to-expect-when-you-visit-the-church-historic-sites-in-nebraska-and-iowa?lang=eng>



NIOBRARA,  
NEBRASKA

PONCA TRIBE  
MUSEUM



NEWEL KNIGHT  
MONUMENT

# UTAH

## 1. Knightsville – Eureka Ut. (Juab County) and Eureka Mining Museum

- Just before entering Eureka (and just past a restaurant), there is a dirt road going left (south) that leads up to Knightsville. While you may not need it a 4-wheel drive car is best. Drive up the road a ways and you will see the schoolhouse foundation up on the hill to the left. You need to walk to get up the hill to the foundation. From there you can see all around the adjacent hillside where there are still remnants of Jesse's mines. If you drive a little further along the dirt road you can take a road to the right and drive up to an abandoned mine and look back at the school foundation. We think this view matches the view in the old black and white photo of Knightsville. Further along the main road you will pass by other mine remnants and up on the hill to the right is the Humbug mine. You can hike up to it. If you continue along the main road you will get to a little draw and bend in the road where there are tall pine trees, the only stand on the hillside. Mayor Castleton thinks this is where Jesse was when he said his prayer on the hillside while both looking down into Utah valley and the stock he was grazing and looking up at the hillside, being inspired that there were minerals in the mountain to benefit the Mormons. You can keep driving around the Godiva mountain area and eventually reach Mammoth and the Knight smelter along highway 6 and then back to Eureka. Not sure how long it takes. Before or after visiting Knightsville be sure to visit the Eureka Mining Museum and Porter Rockwell cabin in the middle of town and a large wood mine rigging at the west end of town.







# UTAH

## 2. Orderville – Lydia Knight Young

## 3. Santa Clara – Samuel Knight

## 4. Manti – DeMills and Stringhams

## 5. Payson & Provo – Jesse Knight Family

- Jesse Knight home – Berg Mortuary. Amanda Knight Hall
- Knight Block Building.

## 6. Utah Museums (Knight related) –

- Tintic Mining Museum (Eureka, Utah)  
Great exhibits showing many photos of the way things were including some of Jesse Knight and his miners, examples of minerals and many other historic artifacts and helpful people to talk to. Across the road is the Porter Rockwell cabin.
- Santa Clara, Utah  
Samuel Knight Museum (lower level of Santa Clara City Hall). See also statues outside of City Hall and the Relief Society House and Jacob Hamblin Home down the street.
- LDS Church History Museum  
See two or three displays that recognize the Knight Family including the cane Joseph Smith gave to Joseph Knight – Ask the docents about Knight displays.
- LDS Church History Library - Ask to see Knight Journals etc.
- Helper Utah Mining and Railroad Museum -  
Displays that include Jesse Knight mining in the area and the nearby ghost town of Storrs in Spring Canyon.

## 7. Cemeteries full of Knights (a few listed here)

- Provo Cemetery – Jesse Knight Family and others
- Manti area Cemeteries – DeMills and Stringhams
- Shunesburg Cemetery
- Santa Clara & St. George Cemetery – Lydia Knight



Salt Lake City -  
LDS Church History  
Museum & Library

Provo -  
Cemetery  
Joseph Knight House  
BYU Collections

Eureka -  
Tintic Mining Museum  
and Knightville  
Ghost Town

Helper -  
Mining & Railroad  
Museum

Manti -  
Cemeteries  
Historic Houses

Orderville  
Cemetery

Shunesburg-  
Cemetery  
Ghost Town

Santa Clara  
Museums and  
Church History Sites



# CALIFORNIA

1. Mormon Battalion visitors Center – San Diego, near old town San Diego

# CANADA

1. Raymond Alberta – 35 miles NE from Cardston, 65 miles NE from Waterton Lakes (Glacier Park). Museum, Rodeo grounds, etc. Original Knight Ranch, now Knight Deseret Ranches owned and operated by the Church.

# MEXICO

1. Colonia Dublan, Galeana, Chihuahua, Mexico – Lydia Knight Young, Daughter of Lydia Goldthwaite Knight. Not far from the Colonia Juarez Temple. Colonia Dublan is 250 miles south of Tucson, Az

# ENGLAND

1. Romsey England



